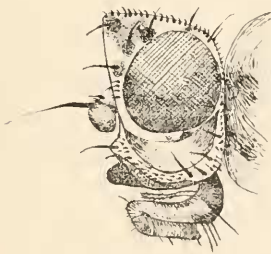


Two New Genera of Diptera.

By D. W. COQUILLET.

Hesperodes n. gen. Mycetophilidæ.

Near *Hesperinus*, but the third and fourth veins united for a short distance, crowding out the small cross vein, as in *Platyura*. Auxiliary vein ending in the costa beyond the base of the third vein, subcostal cross vein nearly midway between the humeral and base of the third vein, the latter forked beyond the apex of the first vein; fourth vein originating from the fifth near its base and just before the union with the third connected by a cross vein with the upper branch of the fifth, forking a short distance beyond the union with the third vein; fifth vein forking midway between the base of the third vein and its union with the fourth; sixth vein prolonged to the wing margin; antennæ about twice as long as the head and thorax united, cylindrical but tapering to the apex, 16-jointed,



Traginops irrorata.



the first joint as broad as long, the second twice as broad as long, and the others twice as long as broad; proboscis very robust, shorter than height of head, palpi 4-jointed, eyes emarginate opposite the

antennæ, ocelli wanting, abdomen slender, more than three times as long as the thorax.

Type, the following species:

Hesperodes johnsoni, n. sp.

Reddish yellow, antennæ and tarsi beyond the base changing to brown, legs destitute of strong lateral bristles, tibial spurs well developed; wings yellowish, becoming grayish hyaline on the posterior margin and at the apex, a brown spot at apex of the first vein.

Length 12 mm.

Delaware Water Gap, N. J., a male specimen collected July 12, 1899, by Mr. C. W. Johnson, after whom the species is named. Type No. 4391, U. S. Nat. Museum.

Traginops n. gen. Agromyzidæ.

Apparently nearest related to *Milichia*. Occiput on its upper part strongly produced forward in the middle, the middle of the front nearly perpendicular, almost on a line with the face, the latter strongly produced forward on its lower part, vibrissæ well developed, clypeus strongly

projecting, cheeks about two-thirds as wide as the eye-height, eyes nearly circular, bare; proboscis robust, fleshy, palpi slender; antennæ shorter than the face, the third joint oval, broader than long, arista dorsal, bare; three ocelli present, ocellar prominence unusually large, ocellar and post-vertical bristles present, two pairs of vertical and three of fronto-orbital bristles (see the accompanying figures); body robust, abdomen less than twice as long as wide, shorter than the thorax; auxiliary vein distinct at its base but toward its apex uniting with the first vein, apex of third vein midway between the apices of the second and fourth, the latter slightly converging toward the third at its apex, hind cross vein situated beyond the last third of the length of the wing, small cross vein at the last fourth of the length of the discal cell, penultimate section of the fourth vein about one-third as long as the ultimate section; sixth vein not reaching the wing margin; the two basal and anal cells complete; pre-apical tibial bristle present, but small; legs otherwise destitute of bristles except near the upper and the under sides of the front femora.

Type, the following species:

***Traginops irrorata*, n. sp.**

Head black, the middle of the front, of the cheeks, and the antennæ except the the arista, yellow; the face clypeus; proboscis and palpi yellowish brown; occiput and sides of front gray pruinose, a black spot at insertion of each bristle, face and upper and lower edges of the cheeks whitish pruinose, two black spots on the upper part of each cheek. Thorax black, opaque, gray pruinose, rather thickly covered with brown spots and dots, bearing three humeral bristles, two post-humeral, one præsutural, four super-alar, four dorso-central and one acrostichal; pleura gray pruinose, marked on its upper edge and also near its middle with a brown vitta, sternopleura bearing three or four macrochaetæ along its upper edge besides several hairs, prosternal bristle present, pleura otherwise bare; scutellum black, gray pruinose, marked with a central brown spot, the margin yellow, four dots and the front angles brown, bearing four macrochaetæ. Abdomen dark brown, slightly polished, the sides and venter gray pruinose and covered with brown dots and spots. Legs yellow, the front femora except their apices, bases of the others, two bands on each tibia, and the tarsi, except the apices of the joints, blackish brown. Wings whitish hyaline, rather thickly covered with brown dots and spots, as in the accompanying figure (from a drawing by Mrs. C.), the posterior margin bordered with dark gray, veins bare; halteres yellow.

Length, 3 to 4 mm.

Georgia. Ten specimens collected by the late H. K. Morrison. I have also examined two specimens collected by Mr. C. W. Johnson in New Jersey. Type No. 4392, U. S. Nat. Museum.